

A layman's overview of 1-Wire technology and its use

Dallas Semiconductor designs and develops technology based on a single bus master that transmits digital communications and operating power for multiple slaves over a single twisted-pair cable. An important aspect of this technology is that every slave has a globally unique digital address. This technology is called 1-Wire[®] because it uses a single wire (plus ground) to accomplish both communication and power transmission. This article briefly discusses the protocol and introduces a variety of applications.

What is the 1-Wire net?

The 1-Wire net is a low-cost bus based on a PC or micro controller communicating digitally over twisted-pair cable with 1-Wire components. The network is defined with an open-drain (wired-AND) master/slave multidrop architecture that uses a resistor pull-up to a nominal 5V supply at the master. A 1-Wire net-based system consists of three main elements: 1) a bus master with controlling software such as the TMEX[™] iButton[®] viewer; 2) wiring and associated connectors; and 3) 1-Wire devices. The system permits tight control because no node is authorized to speak unless requested by the master, and no communication is allowed between slaves except through the master.

The 1-Wire protocol uses conventional CMOS/TTL logic levels with operation specified over a supply voltage range of 2.8V to 6V. Both master and slaves are configured as transceivers permitting bit sequential data to flow in either direction, but only one direction at a time, with data read and written least significant bit (LSB) first. An economical DS9097U COM port adapter interfaces the RS-232 to the net. A DS2480 serial 1-Wire line driver chip is also available to generate the proper signals and programmable waveforms that maximize performance.

Data on the 1-Wire net is transferred by time slots. For example, to write a logic one to a slave, the master pulls the bus low for 15 μ s or less. To write a logic zero, the master pulls the bus low for at least 60 μ s to provide timing margin for worst-case conditions. A system clock is not required, as each 1-Wire part is self-clocked by its own internal oscillator synchronized to the falling edge of the master.

Power for chip operation is derived from the bus during idle communication periods when the DATA line is at 5V by including a half-wave rectifier on each slave.

Whenever the data line is pulled high, the diode in the half-wave rectifier turns on and charges an on-chip capacitor. When the voltage on the net drops below the voltage on the capacitor, the diode is reverse biased, which isolates the charge. The resulting charge provides the energy source to power the slave during the intervals when the net is pulled low. The amount of charge lost during these periods is replenished when the data line returns high. This concept of "stealing" power from the net by a half-wave rectifier is referred to as "parasite power."

When communicating, the master resets the network by holding the bus low for at least 480 μ s, releasing it, and then looking for a responding presence pulse from a slave connected to the line. If a presence pulse is detected, it then accesses the slave by calling its address, controlling the information transfer by generating time slots and examining the response from the slave. Once this handshake is successful, the master issues necessary device-specific commands and performs any needed data transfers between it and the slave. The master can select a single slave from many on the net because of its unique digital address.

A unique address for every part

Within each 1-Wire slave is stored a lasered ROM section with its own guaranteed unique, 64-bit serial number that acts as its node address. This globally unique address is composed of eight bytes divided into three main sections. Starting with the LSB, the first byte stores the 8-bit family codes that identify the device type. The next six bytes store a customizable 48-bit individual address. The last byte, the most significant byte (MSB), contains a cyclic redundancy check (CRC) with a value based on the data contained in the first seven bytes. This allows the master to determine if an address was read without error. With a 2⁴⁸ serial number pool, conflicting or duplicate node addresses on the net are never a problem.

Because 1-Wire devices can be formatted with a file directory like a floppy disk, files can be randomly accessed and changed without disturbing other records. Information is read or written when the master addresses a device connected to the bus, or an iButton is touched to a probe somewhere along the 1-Wire net. The inclusion of up to 64k of memory in 1-Wire chips allows standard information such as employee name, ID number, and security level to be stored within the device. Maximum data security can be provided by 1-Wire chip implementation of the US government-certified Secure Hash Algorithm (SHA-1).

Historically, the 1-Wire net was envisioned as a single twisted pair routed throughout the area of interest with 1-

Addressable digital instruments

In addition to the DS2406 and DS2409 1-Wire control chips, several digital functions such as temperature sensors and analog-to-digital converters (ADCs) are available. These ICs measure a wide variety of physical properties over the 1-Wire net. A distinct advantage of 1-Wire instruments is that all communicate using 1-Wire protocol regardless of the particular property (for example, voltage, current, and resistance) being measured. Other methods employ a variety of signal-conditioning circuitry such as instrumentation amplifiers and voltage-to-frequency converters, which out of necessity makes their outputs different and often requires separate cables for each sensor.

The unique ID address of each device is the key for the bus master to interpret what parameter a particular 1-Wire instrument is measuring. Several examples of 1-Wire instrumentation for environmental measurement are presented later in this article. Note that all circuit examples use a BAT54S dual Schottky diode and input capacitor to provide a local source of power. The remaining Schottky diode in the package is connected across DATA and GND and provides circuit protection by restricting signal excursions that go below ground to approximately -0.4V. Without this diode, negative signal excursions on the bus in excess of 0.6V forward bias the parasitic substrate diode and interfere with chip function.

Our first example uses the DS2423 counter, which has inputs that respond to logic-level changes or switch closures. This makes it suitable to implement a variety of tally or rate sensors. A circuit example using magnetically actuated reed switches is shown in **Figure 2**. In the circuit, an external 1M pull-down resistor is used from the inputs to ground to prevent generating spurious counts during turn-on and to minimize noise pick-up. With lithium backup, this circuit is used to build a 1-Wire rain gauge and a hub-mounted wheel odometer. In those applications, a small permanent magnet moves past the reed switch each time a tipping bucket fills and empties or the wheel rotates one full turn, respectively. This momentarily closes the reed switch, incrementing the counter to indicate 0.01 in of rain fall or one revolution. The circuit is also used in a 1-Wire weather station to measure wind speed.

Measuring humidity on the 1-Wire net

Humidity is an important factor in many manufacturing operations and also affects personal comfort. With the proper sensing element, it can be measured over the 1-Wire net. The sensing element specified here develops a linear voltage versus relative humidity (RH) output that is ratiometric to supply voltage. That is, when the supply voltage varies, the sensor output voltage follows in direct proportion. This requires measuring both the voltage across the sensor element and its output voltage. In addition,

calculating true RH requires knowing the temperature at the sensing element. Because it contains all the necessary functions for calculating, the DS2438 with its two ADCs and a temperature sensor makes an ideal choice for constructing a humidity sensor. In **Figure 3**, the analog output of the HIH-3610 humidity-sensing element is converted to digital by the main ADC input of a DS2438. The bus master first has U1, the DS2438, report the supply voltage level on its VDD pin, which is also the supply-voltage for U2, the sensing element. Next, the master has U1 read the output voltage of U2 and reports local temperature from its on-chip sensor. Finally, the master calculates true RH from the three parameters supplied by U1.

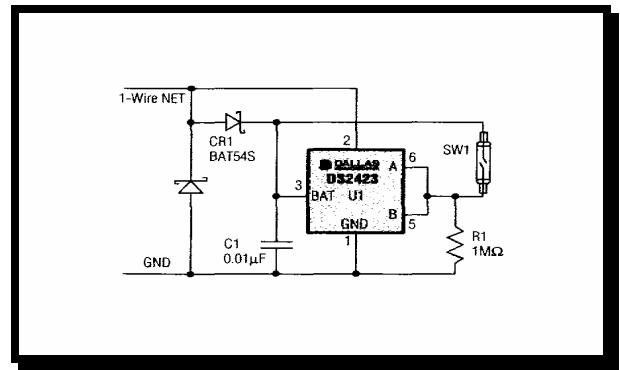


Figure 2. The basic DS2423 counter circuit uses a reed switch as an input.

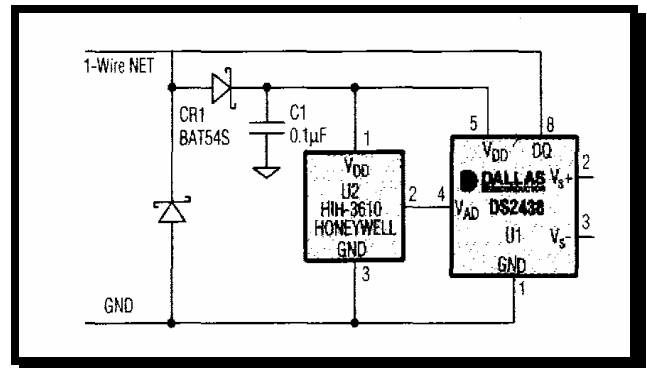


Figure 3. A DS2438 with parasite power is ideal to construct a humidity sensor.

Measuring barometric pressure on the 1-Wire net

Barometric pressure is another important meteorological parameter that can be measured over a 1-Wire net using the DS2438. By selecting a ratiometric pressure sensor that contains comprehensive on-chip signal-conditioning

circuitry, the circuit is very straightforward. You must know both the output voltage representing atmospheric pressure and the supply voltage across the element to accurately calculate barometric pressure. Because the MPXA4115 pressure sensor can require as much as 10mA at 5V an external power source is needed. Note that external power should also be connected to the DS2438's power pin. This allows the DS2438 to measure the supply voltage applied to the pressure-sensing element. Flexible tubing can be routed to sample the outside air pressure and avoid unwanted pressure changes (noise) caused by doors and windows opening and closing or elevators moving inside the building.

Measuring wind direction on the 1-Wire net

The original 1-Wire weather station used DS2401s to label each of the eight magnetic reed switches in its wind direction sensor, as shown in **Figure 4**. A single DS2450 quad ADC can perform the same function with five resistors. As the wind rotates the wind vane, a magnet mounted on a tracking rotor opens and closes one (or two) of the reed switches. When a reed switch closes, it changes the voltages seen at the input pins of U1, the DS2450. For example, if the magnet is in a position to close S1 (north), the voltage seen on pin 7 changes from V_{CC} to $\frac{1}{2} V_{CC}$ or approximately from 5V to 2.5V. Since all 16 wind vane positions produce unique 4-bit signals from the ADC, it is only necessary to indicate north, or specify which direction the wind vane is currently pointing to initialize the sensor.

Because two reed switches are closed when the magnet is midway between them, just eight reed switches indicate 16 compass points. Referring to the schematic and position 2 in Table 1, which lists the voltages seen at the ADC inputs for all 16 cardinal points. Observe that when S1 and S2 are closed 3.3V is applied to ADC inputs B and C. This occurs because the parallel combination of pull-up resistors R2 and R3 act as a single resistor half their value connected in series with R1 to form a voltage divider with 0.66V across R1. Note that this condition occurs twice more at switch positions 4 and 16 generating 3.3V at those cardinal points also.

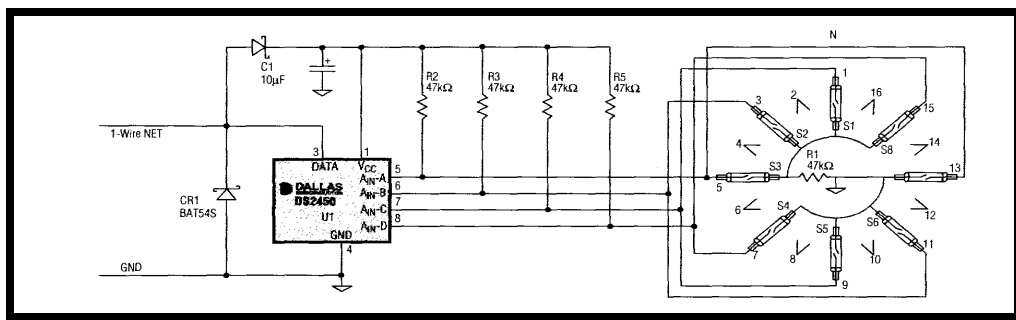
Table1. Wind vane position versus the voltage seen at the four DS2450 ADC inputs

CARDINAL POINTS	VOLTAGE INPUT AT B (V)	VOLTAGE INPUT AT C (V)	VOLTAGE INPUT AT B (V)	VOLTAGE INPUT AT A (V)
1	5	2.5	5	5
2	5	3.3	3.3	5
3	5	5	2.5	5
4	5	5	3.3	3.3
5	5	5	5	2.5
6	0	5	5	2.5
7	0	5	5	5
8	0	0	5	5
9	5	0	5	5
10	5	0	0	5
11	5	5	0	5
12	5	5	0	0
13	5	5	5	0
14	2.5	5	5	0
15	2.5	5	5	5
16	3.3	3.3	5	5

Measuring solar radiance on the 1-Wire net

The amount of sunlight and its duration are additional parameters easily measured with 1-Wire sensors. The amount is a measure of air and sky conditions, while duration is related to the equinoxes and the length of the day. Although the mechanical and optical implementations tend to be complex, the electronics can be easily created using a DS2438. **Figure 5** illustrates a solar-radiance sensor built using a sense resistor connected in series with a photodiode. Light striking the photodiode generates photocurrents that develop a voltage across the sense resistor that is read by the ADC. Optical filters can be added to control both the wavelength and optical bandpass to which the sensor responds.

Figure4. A DS2450 quad ADC-based wind-direction sensor measures 16 compass points.



Measuring a thermocouple on the 1-Wire net

One can also measure extreme temperatures using conventional thermocouples (TC) that are directly digitized at the cold junction using a DS2760 multifunction 1-Wire chip. The twisted-pair cable of the 1-Wire net covers the distance between the TC and bus master, effectively replacing the expensive TC extension cable normally used. Because of its unique ID address, multiple smart TCs can be arbitrarily placed where needed along the net, greatly minimizing the positioning and cost of an installation. With an LSB of 15.625pV, the chip can directly digitize the millivolt-level output produced between the hot and cold junctions of the typical IC as its on-chip temperature sensor continuously monitors the temperature at the cold junction of the TC. It contains user-accessible memory for storage of sensor-specific data such as TC type, location, and the date it was placed into service. This information minimizes the probability of error due to the mislabeling of sensors. Thus, a DS2760 can be used with any TC type because the bus master's calculations are based on the stored data and the

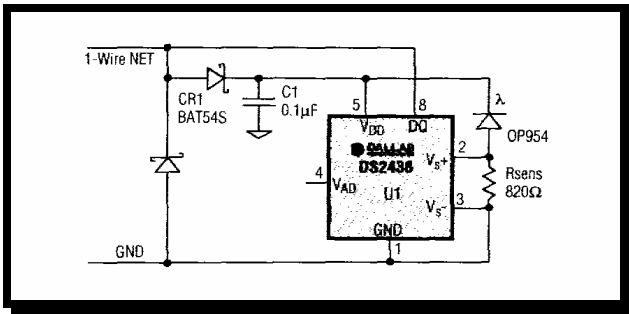


Figure5. The amount of sunlight available can be easily measured with a photodiode and a DS2438.

temperature of the cold junction, as reported by the on-chip temperature sensor. **Figure 6** illustrates both the simplicity and ease with which a DS2760 can be used to convert a standard thermocouple into a smart sensor with multidrop capability. Adding R1 allows VDD to be measured, which is useful in troubleshooting to verify that the voltage available on the 1-Wire net is within acceptable limits.

Summary

1-Wire technology made possible the combination of electronic communication and instrumentation based on positive identification of individual nodes on a single self-powered net. Continued development of the technology has increased the array of 1-Wire chips able to interface with the environment, measuring events, voltage, current, temperature, position, etc. In turn, these chips enabled the construction of sensors that measure a host of environmental parameters on a single twisted-pair cable as described within this article.

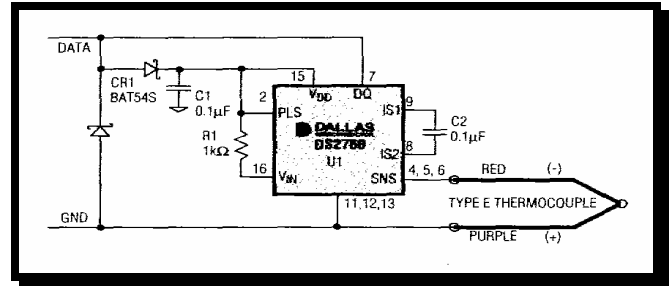


Figure6. A DS2760 can convert a conventional TC into a smart sensor with multidrop capability.

Including ROM, EPROM, and EEPROM in 1-Wire slaves in a stainless-steel case called an iButton further enabled a personal electronic authentication. Personal and data security advanced with the creation of SHA-1 based 1-Wire chips in iButtons for use with monetary transactions. Whether housed in an armored stainless-steel iButton or standard IC packages, 1-Wire communication uses a noncritical two-contact interface. 1-Wire technology is now used for transportation tokens, identification badges, entry security, and after-market control. New applications are continually being added. Visit www.ibutton.com/solutions to learn more about commercial ventures using 1-Wire technology.

1-Wire and iButton are registered trademarks of Dallas Semiconductor. TMEX is a trademark of Dallas Semiconductor.

MicroLAN is a trademark of Dallas Semiconductor.